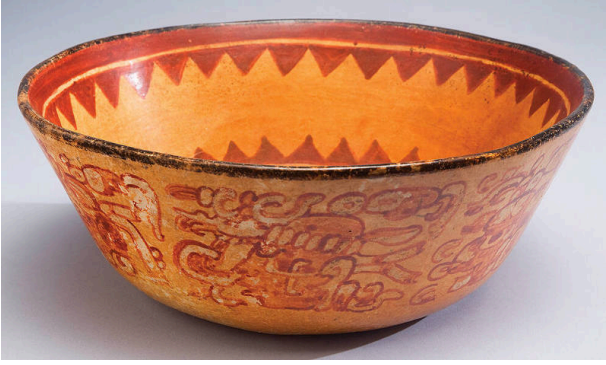


# Basic Detail Report

---



## Bowl

### Date

ca. 600-900

### Primary Maker

Maya (archaeological culture)

### Medium

pottery and paint

## Description

This beautifully painted bowl is decorated with the head variant or portrait glyphs of eight of the major deities of the Classic Maya pantheon. Included are the Hero Twins, as well as a pair of gods known as Jaguar Paddler and Stingray Paddler, who were responsible for paddling a canoe containing the Maize Deity from the Underworld to the place of his rebirth. The iconography on this bowl suggests that it was part of the funerary goods of a person of high status, made to accompany him or her in their journey after death.

## Dimensions

Overall: 3 1/2 x 9 3/8 in. (8.9 x 23.8 cm)